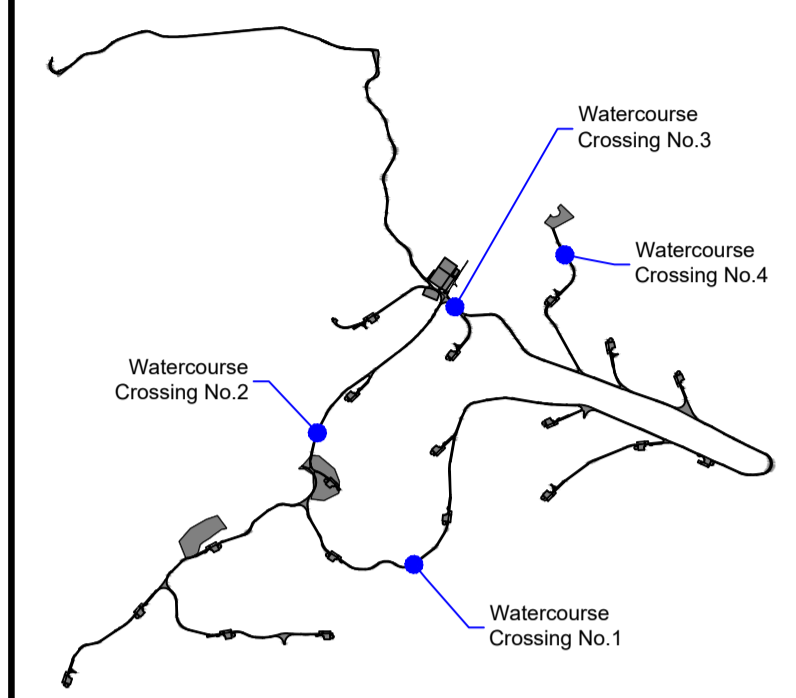


**Notes :**

1. All drawings are to be read in conjunction with all relevant Specifications, Bills of Materials, Architectural, Services and Engineering drawings.
2. Any discrepancies between these documents shall be brought to the attention of the Engineer.
3. All dimensions are in millimetres, unless noted otherwise.
4. All levels are in metres related to Ordnance Datum.
5. Drawings are not to be scaled.
6. The finalised layout may be subject to micro-siting due to unforeseen ground conditions. The extent of flexibility will be site specific and should generally not extend beyond 20 metres.

**Reference Drawings :**

- 19107-5005 Site Layout - Master Sheet
- 19107-5013 Drainage Layout - Master Sheet
- 19107-5025 Drainage Details - Sheet 2



Key Plan NTS



Photo Taken at Watercourse Crossing No. 1



Photo Taken at Watercourse Crossing No. 2

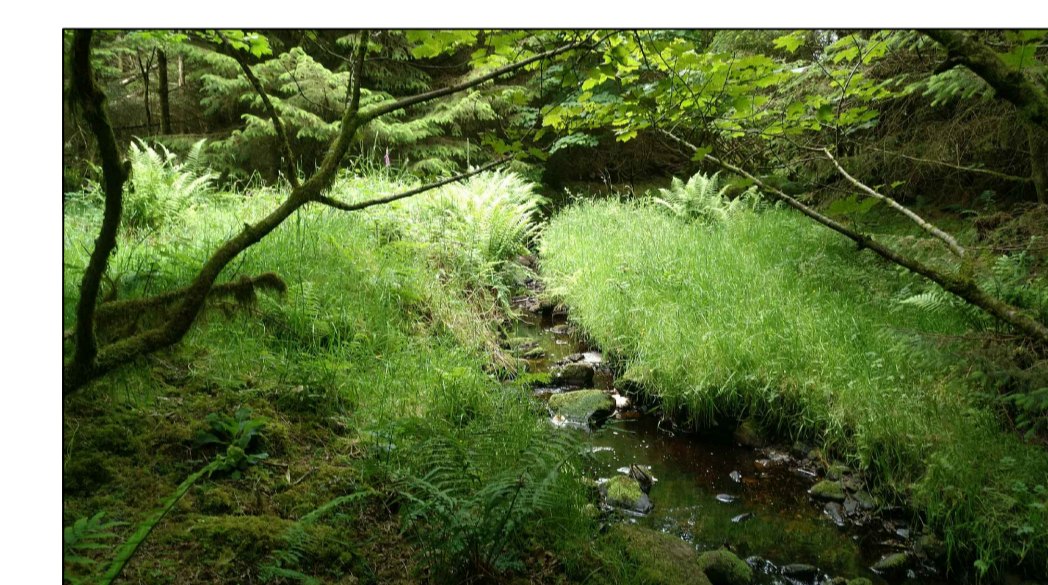
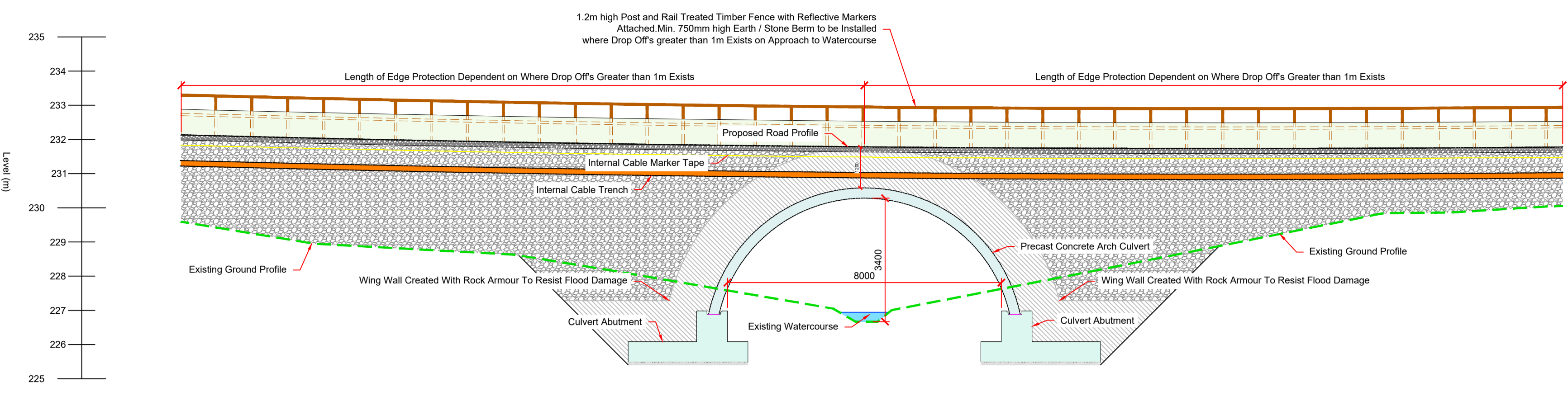


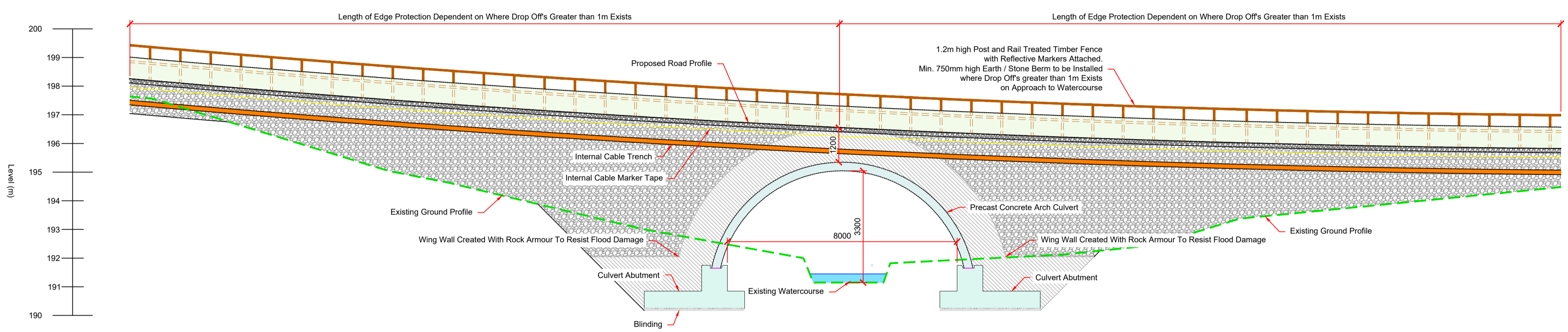
Photo Taken at Watercourse Crossing No. 3



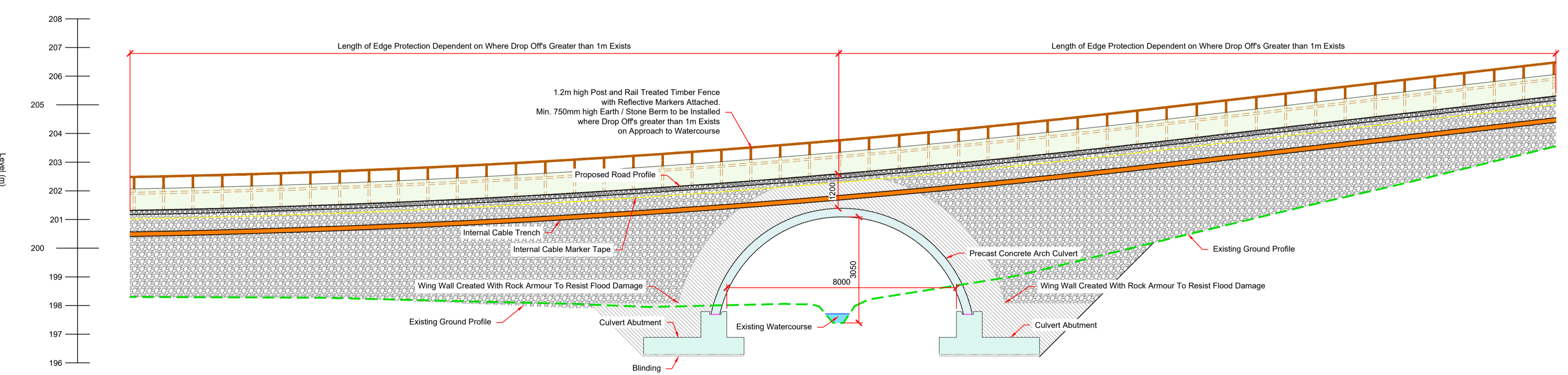
Photo Taken at Watercourse Crossing No. 4



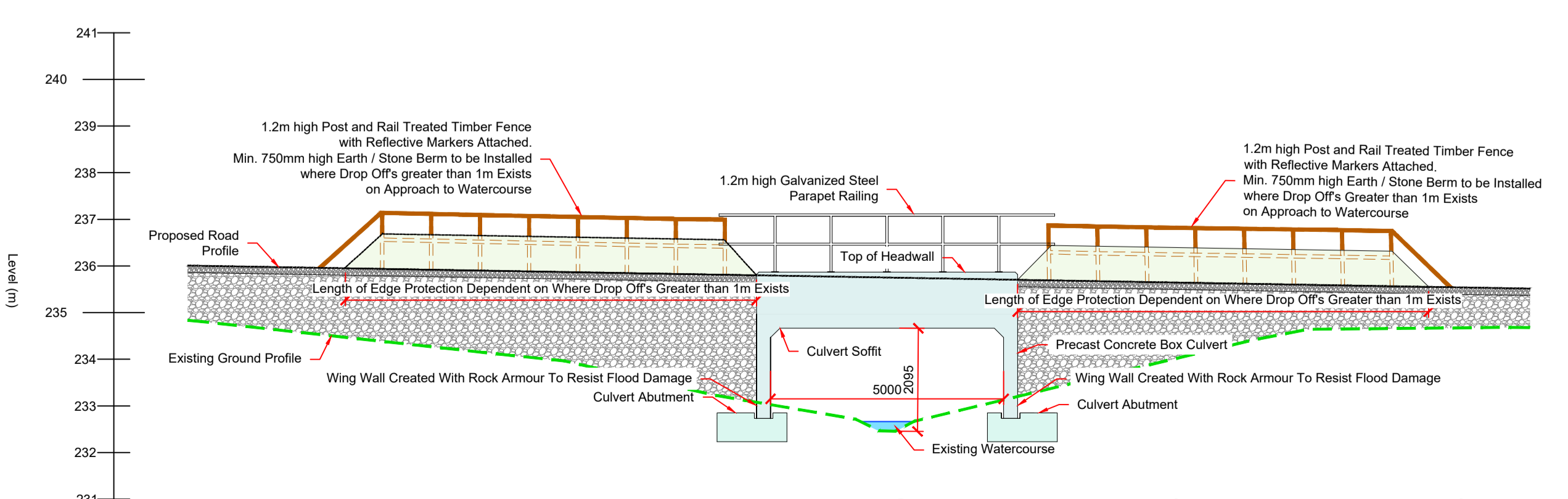
Longsection through Watercourse Crossing No. 1 (Downstream Face) Scale 1:50



Longsection through Watercourse Crossing No. 2 (Upstream Face) Scale 1:50



Longsection through Watercourse Crossing No. 3 (Downstream Face) Scale 1:50



Longsection through Watercourse Crossing No. 4 (Upstream Face) Scale 1:50

Rev.	Date	Description	by	chk'd	app
A	03.07.2020	Issued For Planning	JK	CM	HBR

Project: Carrowagowan Wind Farm

Title: Watercourse Crossing Details



**Malachy Walsh and Partners**  
Consulting Engineers  
Cork | Tralee | London | Limerick

Client: Reen Point, Blennerville, Tralee, Co. Kerry.  
Tel: +353 (0)66 7123404  
Fax: +353 (0)66 7126386  
E-mail: tralee@mwp.ie

Drawn	Ch'd (DO)	Ch'd (Eng)	Approved	Dwg. No.	Rev.
JK	JK	PN	JoL	19107-5026	A